

General information, 19th CIPAC/FAO/WHO Joint Open Meeting and 68th CIPAC Annual Meeting

June 11 to June 20, 2024, Wageningen, the Netherlands

About Wageningen and WFSR

Wageningen

Wageningen is a city, dating back to 1263, and is located in the centre of the Netherlands. The municipality has approx. 40,000 inhabitants, many thousands of whom are students. Wageningen University and Research institutes (WUR) have approximately 7,400 employees. Another large employer is the Maritime Research Institute of the Netherlands (MARIN). The MARIN is a world-renowned institute in the field of maritime and hydrodynamic research.

Wageningen is bordered by two ice ages moraines to the east and west and the river Rhine to the south. Wageningen has an important inland port on the Rhine, including transshipment and storage capacity for oil.

Things to visit in Wageningen are the 'Drijen' and 'Belmonte' arboreta with emphasis on the latter as it offers splendid views across the river Rhine (<https://www.botanischetuinen.nl/en/gardens/belmonte-arboretum>). Another must see is the statue gallery 'Het Depot' (<https://www.hetdepot.nl/en>), nicely located near the arboretum 'Drijen' and less than 15 min by foot from the Wageningen International Congress Centre, the conference venue and hotel.

WFSR

Wageningen Food Safety Research (<https://www.wur.nl/nl/onderzoek-resultaten/onderzoeksinstituten/food-safety-research.htm>) or WFSR is one of the WUR institutes, and conducts high-quality independent research into safe and reliable food. WFSR mainly works for the Dutch government and is an official control laboratory. We measure residues of e.g. toxins, contaminants and hormones, but also investigate microbial and viral contamination in food and feed. Our task is to perform risk analysis, follow trends in the food production chain, identify new risks, check food for authenticity and conduct forensic research. We advise governments and offer a wide range of training activities. In addition, WFSR is a national reference laboratory (NRL) for over 20 different tasks and is a European reference laboratory (EURL) for both Growth Promoters and for Mycotoxins & Plant Toxins.

Pesticide research at WFSR is performed by a staff of approx. 45 people. The vast majority of the young and enthusiastic colleagues received at least a higher technical education or is master or PhD. WFSR is Dutch NRL for all four domains of the Pesticide EURLs: Fruits & Vegetables, Cereals & Feeding Stuff, Food of Animal Origin and Single Residue Methods. Furthermore both pesticide teams have participated, and still participate in numerous EU projects like LUCAS, Sprint, EFSA Screener project, and PARC, either on our own merits or e.g. via cooperation with Wageningen University, the National Institute for Public Health and the Environment (RIVM) or the Radboud University of Nijmegen, the Netherlands. This all results in a steady stream of high ranked papers. Besides the very important research on new techniques and upcoming food and environmental related issues WFSR is the house laboratory of the Dutch Food Safety Authority (NVWA), and as such responsible for the

import and market control of pesticides residues in food and feed and of the control of plant protection products (PPPs). The latter also in close cooperation with the Dutch Board for the Authorisation of Plant Protection Products and Biocides (CTGB), the competent authority for PPPs for the Netherlands.

How to reach Wageningen

Schiphol international airport is the main route to the Netherlands. However other possible options are the smaller Rotterdam or Eindhoven airport. Schiphol airport contains a train station where trains will bring you to the train station Ede-Wageningen. Here you will have to take a bus or taxi to the centre of Wageningen where the WICC is located. A seven minutes stroll from the bus station will take you there. From Rotterdam or Eindhoven airport you will have to take a bus (or taxi) to the local main train station from which trains will depart at least two times/hour to the Ede-Wageningen train station. From each airport the WICC can be reached in approximately two hours. When coming by car just follow the navigation to the WICC where free parking is included in the room reservation. Wageningen is nicely located between several main highways.

Visa requirements

Generally speaking, all other foreigners than citizens from the EU require a visa for stays in the Netherlands. A visa is not required for semi-annual visits of up to three months for nationals of those countries for which the European Community has abolished the visa requirement. For details you may contact the following website: <https://www.netherlandsworldwide.nl/visa-the-netherlands>.

Registration procedure

Registration has to take place via the CIPAC website where a registration form is present. Besides personal data you will be requested to register for the activities in which you want to participate. As costs are connected with some of the activities you will be charged accordingly (€110 per person attending the excursion, €130 (partners included) for attending the symposium/dinner). Finally you will be guided to a bank or credit card company for payment. The registration is complete after paying of the money owed.

The personal data will only be used for the organization of the meetings as mentioned in the invitation and all personal data will be destroyed two months after June 20.

Exemption of payment

Symposium hosts and Symposium speakers are exempted from the Symposium costs. Please indicate this during the registration. Poster presenters and all other participants have to pay the Symposium costs of €130.

Cancellation

In the unfortunate event that you have booked for the excursion and/or the symposium and circumstances force you to withdraw your reservation we can offer you the following. You may cancel your reservation before May 1, 2024 by sending an email to cipac2024.wfsr@wur.nl. The participants' costs will then be refunded minus administration costs (€10). Unfortunately, we cannot refund your bank or credit card costs. If you cancel your reservation on May 1 (or later) the participants' costs cannot be refunded due to arrangements made with restaurants, museums and bus company.

The Hotel

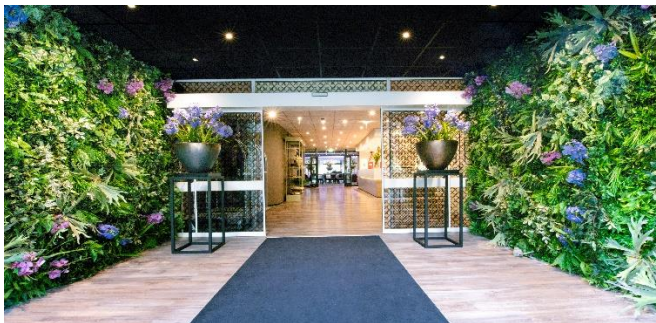
Rooms are reserved at the venue of the meeting in the centre of Wageningen with many restaurants and pubs around the corner. The venue is the Wageningen International Congress Centre (WICC). The rooms will be available from June 10 to June 21 at special discount rates. Please go to the WICC website at <https://www.wicc.nl/en/online-booking/> and fill in the required questions.

Please note that you have to book before April 1, 2024 and use the Block code 544333 to receive the meeting discount. Also note that after the deadline of April 1, 2024 the availability of the room cannot be guaranteed, but that the special rate will remain available. Please contact the organizing committee in case no hotel room can be booked as we might be able to suggest other options however not against a discount rate. The address and contact details of the WICC are as follows:

Hotel WICC, Lawickse Allee 9, 6701 AN Wageningen, the Netherlands

Tel: +31 (0) 317 490 133, Email: info@wicc.nl

The rates are €105 per night, including breakfast and VAT but excluding tourist tax of €3,00 per person, per night (at the time of writing). The rate relates to a single room. For other options (e.g. when accompanied by a partner) please contact the WICC for possibilities. No discount rates or guaranteed availability are available for other options.



Photos: WICC


Of course other overnight stay options can be chosen, e.g. another hotel or an Airbnb location. However no discount rates or transport from and to the premisses will be arranged.

The Excursion

The excursion on Sunday will bring you in the morning to the Netherlands Open Air Museum (<https://www.openluchtmuseum.nl/?taal=en>). The museum is only 25 km from Wageningen and located in a very nice forest area. The museum covers life in the Netherlands through the ages and showcases the famous Dutch windmills, houses, farms, churches and work places. Demonstrations and guided tours will be given and a light lunch will be served.



Photos: Open air museum

In the afternoon we will relocate to the National Park ‘De Hoge Veluwe’ (<https://hogeveluwe.nl/en>) where the famous Kröller-Müller museum is located (<https://krollermuller.nl/en> but also available in ). At the Kröller-Müller Museum, you will find the world’s finest Vincent van Gogh collection and enjoy masterpieces by modern masters such as Claude Monet, Georges Seurat, Pablo Picasso and Piet Mondriaan. The museum is a treasure trove of the art movements ‘De Stijl’ and ‘Futurism’, and will surprise you with presentations of contemporary artists. The museum also offers a vast sculpture garden, especially recommended with nice weather. You will stroll past works by Barbara Hepworth, Jean Dubuffet, Marta Pan, the Gerrit Rietveld pavilion and the Aldo van Eyck pavilion. It is highly recommended to visit the museums’ website to prepare yourself as there is so much to see!

For the more active colleagues there are lots of possibilities for making a nice stroll or taking a free white bike and perform your own bike tour through the parc. But: take care to be back on time as the bus will leave according to schedule! The bus ride back to the WICC is only 30 km so you will be back at around 18:00 at the WICC at the latest.



Photo: Kröller-Müller museum

About the Weather

The weather for June in Wageningen is mild with pleasant temperatures (average noon temperature around 20-21°C) and moderate rainfall. However Wageningen is located in the Netherlands which means that a rain coat or a sturdy umbrella (because of strong winds) can be handy.

Contact

In case questions arise please contact us via the email address: cipac2024.wfsr@wur.nl. During the meeting more direct means of contact (telephone, app-groups etc.) will become available